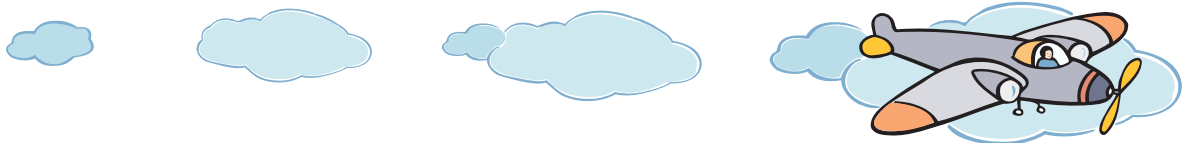


Name: \_\_\_\_\_ Grade: \_\_\_\_\_ Date: \_\_\_\_\_

# Similes: Interesting Descriptions

Think about people, places or things that were mentioned in *Amelia and Eleanor Go for a Ride*. Complete the similes below. For number 10, write an original simile related to the story.

1. Eleanor's gown was as beautiful as \_\_\_\_\_.
2. The stars in the night sky sparkled like \_\_\_\_\_.
3. The two women were as excited as \_\_\_\_\_.
4. The angel food cake was as light as \_\_\_\_\_.
5. The White House chef was as busy as \_\_\_\_\_.
6. The scarf Amelia gave Eleanor was as blue as \_\_\_\_\_.
7. The Red Room rug was soft like a \_\_\_\_\_.
8. The crab chowder was as thick as \_\_\_\_\_.
9. Eleanor drove her car as fast as \_\_\_\_\_.
10. \_\_\_\_\_



# Character Poems

It is fun to describe people by comparing them to things we meet and use every day. Follow these directions to describe Amelia Earhart.

## 1. List things found in a particular place (like a kitchen) or on an object (like a car.)

### Kitchen

oven      bowl      refrigerator  
pitcher    cabinet    blender  
cup      teapot     toaster

### Car

key      seat      clutch  
engine    chassis    brake  
wheels    hubcap    steering wheel

### Look at this list of human qualities and feelings:

responsibility    warmth      kindness      adventurous    cheer      honesty  
compassion      joy          laughter      confidence    charity      honesty  
courtesy          daring      courage      love          creativity    caring

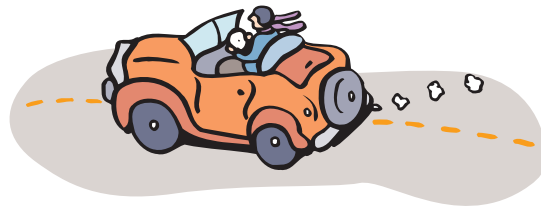
## 2. Combine the two to describe a person or book character.

*Example:*

Who is she?

A **bowlf** of charity  
An **oven** of warmth  
A **cup** of kindness  
A **pitcher** full of adventurous spirit  
A **cabinet** of compassion

Eleanor Roosevelt



Write your description of Amelia Earhart here. Use words from the car and human qualities lists.

Who is she?

---

---

---

---

---

Amelia Earhart

# Women in Aviation

Visit the Smithsonian National Air and Space Museum Web site at  
[www.nasm.edu/nasm/aero/women.htm](http://www.nasm.edu/nasm/aero/women.htm).

Match each woman aviator with her accomplishment.

## The Women

1. Amelia Earhart \_\_\_\_\_
2. Bessie Coleman \_\_\_\_\_
3. Ruth Nichols \_\_\_\_\_
4. Jacqueline Cochran \_\_\_\_\_
5. Laura Ingalls \_\_\_\_\_
6. Anne Morrow Lindbergh \_\_\_\_\_
7. Dr. Sally Ride \_\_\_\_\_
8. Betty Skelton \_\_\_\_\_
9. Ruth Law \_\_\_\_\_

## The Accomplishments

- A. In 1980 she held more speed, altitude and distance records than any other male or female pilot in the history of flight.
- B. She was the first American woman to fly in space.
- C. She was the only woman to hold the women's world speed, altitude and distance records for heavy landplanes all at the same time.
- D. he was the U.S. Feminine Aerobatic Champion in 1948, 1949 and 1950.
- E. She was the first woman to fly nonstop from the east coast to the west coast.
- F. She bought her first aircraft from Orville Wright in 1912 and became the first woman to fly at night.
- G. She received the first pilot's license ever issued to an African American, male or female.
- H. She was the first woman to fly solo across the Atlantic Ocean.
- I. She was the first woman in the United States to earn a glider pilot's license.

Complete the sentences below to compare two of the women.

If I were \_\_\_\_\_ name \_\_\_\_\_ I would \_\_\_\_\_

\_\_\_\_\_ accomplishment \_\_\_\_\_

But I wouldn't \_\_\_\_\_ accomplishment of second woman \_\_\_\_\_

Because \_\_\_\_\_ name of second woman \_\_\_\_\_ did that.

